

# Wonderware InTouch



HMI and Beyond...

inven<sup>ys</sup>  
*Wonderware*<sup>®</sup>

EXIT 10/14/2011 2:49:37 PM  
 Summary Alarms Trends Details Reports EFM Daily EFM Hourly Maintenance  
 Kell-ups Gile

Function FR ER DP Temp  
 Current Device Details

**Daisy D-9**

**Current EFM Data**

Current Static Pressure	207.00 PSIA
Current Differential Pressure	30.90 InH2O
Current Gas Temperature	99.66 °F
Current Flow Rate	223.87 MCFD
Current Energy Rate	267.39 MMBTU
Current Flow Time	1440.00 Mins

**Historical EFM Data**

Yesterday's Total Flow	5441 MCF
Yesterday's Total Energy	6257 MMBTU

**Other EFM Data**

BTU	0.00 BTU
Battery Voltage	12.43 VDC
Orifice Plate Size	2.50 inch
Pipe Diameter	3.75 inch

**EFM Communications**

Communication Status	Good
Percent Polling Efficiency	98
Last Poll Date/Time	10/14/2011 14:49

POLL See Log

**GASCO**

ACME PETROLEUM C

TANK VAPO

STACK TE

MOOB

MODBUS

MOD

MOOBU

ON

OFF

HIGH

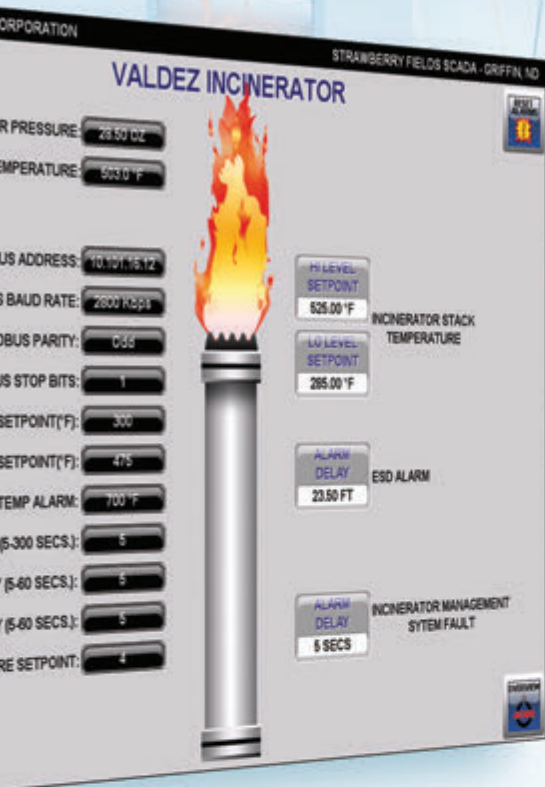
PURGE TIME

MAIN VALVE DELAY

HIGH FIRE DELAY

HIGH FI

“With the new Wonderware system we estimate an average annual return of \$300,000 on the current investment.”  
 – Ray Gonzales, Long Beach Water Department  
 Telecommunications Manager



## InTouch Goes Beyond the Ordinary HMI

For 25 years Wonderware® InTouch® has been the world's number one human machine interface (HMI), offering market leading innovation, brilliant graphics, legendary ease of use, unsurpassed connectivity, the industry's best support and the broadest partner ecosystem.

Award winning InTouch software is an open and extensible Supervisory HMI and SCADA solution that enables you to quickly create standardized, reusable visualization applications and then deploy them across your entire enterprise without having to leave your office.

Used in over one-third of the world's industrial facilities, InTouch software continues to deliver business value by helping you:

- Make Better Decisions
- Drive for Maximum Performance
- Increase your Agility
- Lower Your Costs
- Reduce Risk and Stay Secure

# The World's #1 HMI

Twenty five years ago Wonderware InTouch changed the world by providing industrial customers with the first Microsoft Windows based HMI. Any size industrial company could visualize and control their critical processes with an affordable and open system solution—InTouch.

Today, InTouch continues to set the standard for HMI software by harnessing the latest virtualization and thin client technologies from Microsoft, VMware and much more.

- Industry Leader in HMI market share
- Microsoft Global Enterprise Partner of the Year



Wonderware  
InTouch

The World's  
**#1** HMI

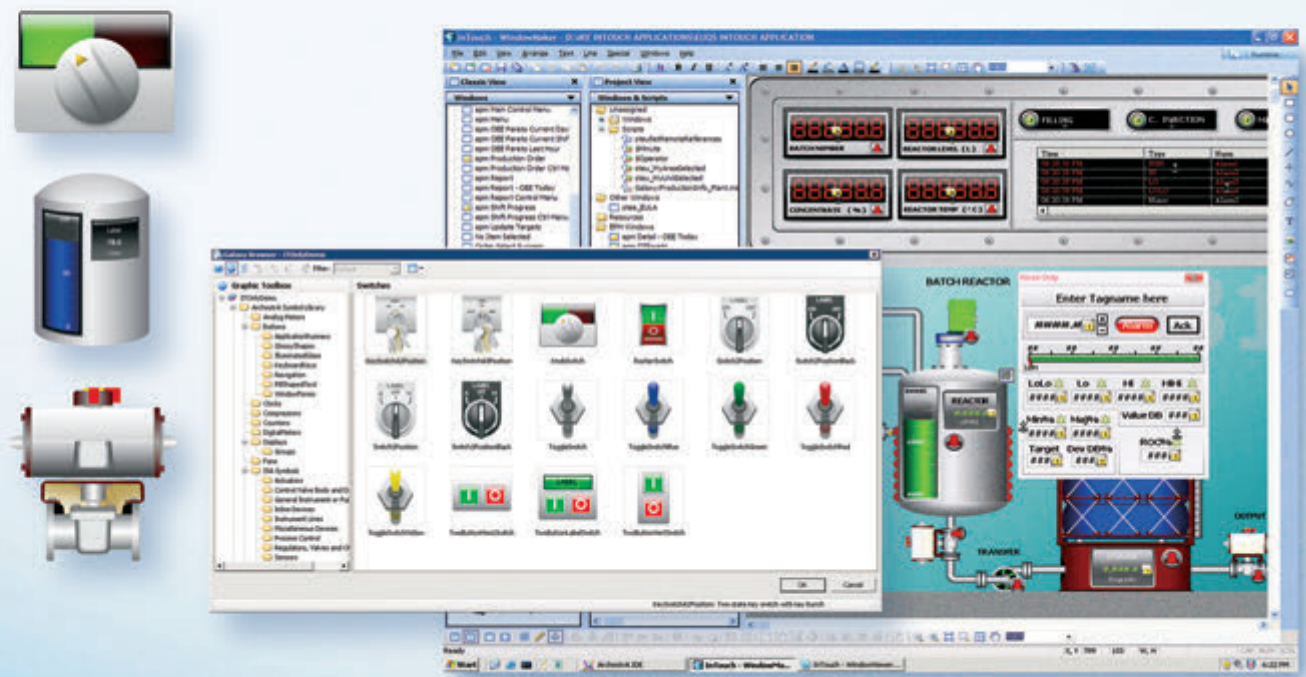
“We did triple the work in one-fourth the time because Wonderware software’s repeatability and deployment of objects makes development easy.”

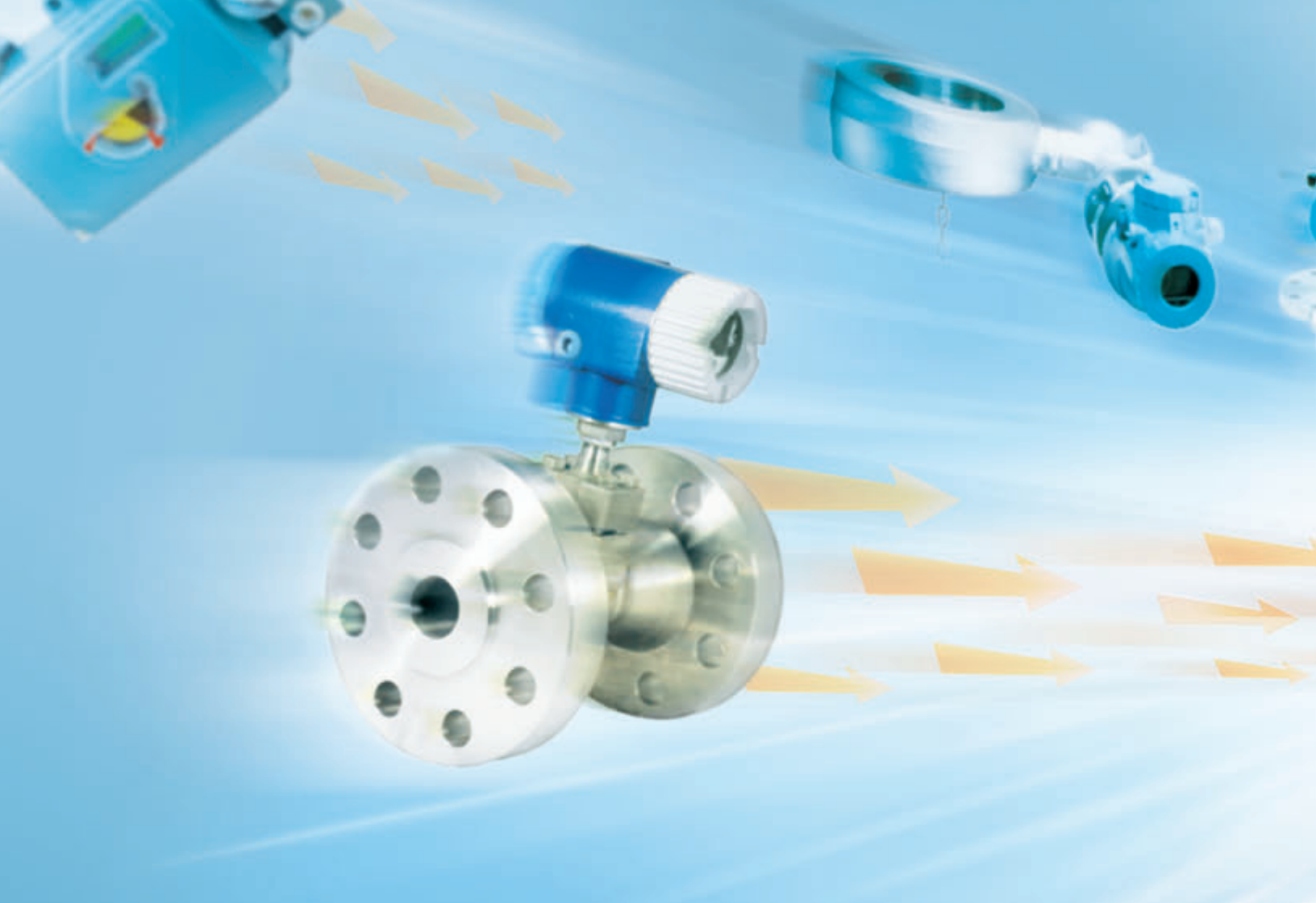
Jeremy Peterson,  
Chief Operating Officer,  
CP Control Technologies



## Unequaled Investment Protection

From day one, Wonderware InTouch has helped industrial companies, like yours, become more productive, save money, save time and reduce risk during the entire life of their system. An InTouch application implemented decades ago can still run, unchanged, on the latest InTouch software to give you the benefits of the latest Hardware and Operating System improvements with no re-engineering costs—no other company can make that claim.





“The biggest challenge was to find a system that was easy to modify, could communicate with all types of equipment and the different manufacturer protocols we had to link together. With Wonderware software’s powerful features and flexible communications capabilities, it proved to be the ideal solution to meet our needs.”

Mark Osborn, Portland General Electric Distributed Resources Manager





## InTouch Brings It All Together

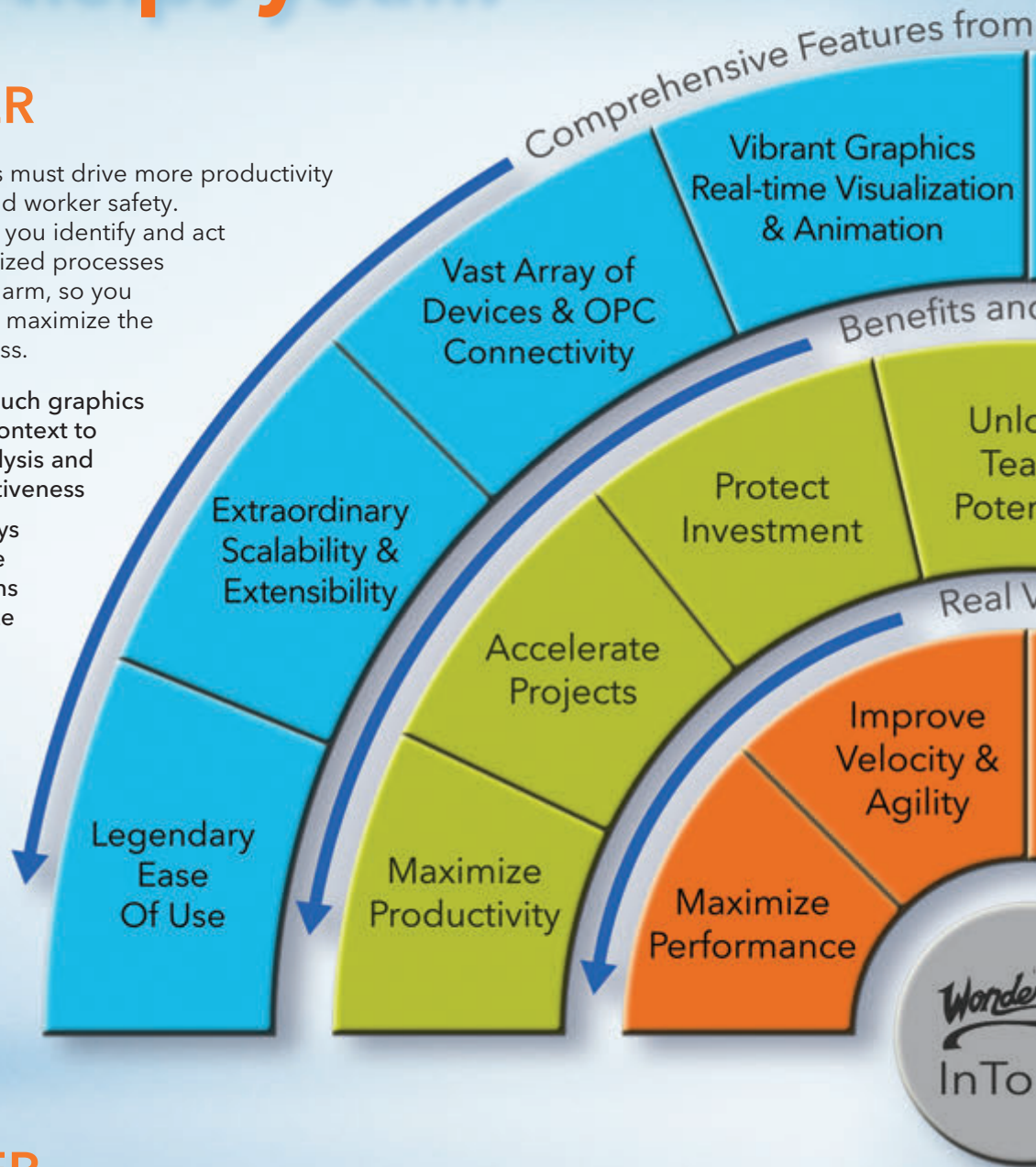
In today's modern industrial facilities there is a myriad of data sources – from field devices, to PLCs to full blown Distributed Control Systems (DCS). InTouch has been the leader in open systems for 25 years and has earned its reputation by connecting to more plant floor devices and systems than anyone. Industrial plants across the globe use InTouch over the software provided by their PLC suppliers. InTouch can connect to hundreds of available I/O and OPC servers and the Archestra DA Server toolkit allows you to easily create specialized data servers if needed. No data is off limits to InTouch.

# Whatever you do, InTouch helps you...

## ...do it BETTER

Today, industrial companies must drive more productivity while maintaining quality and worker safety. Wonderware InTouch helps you identify and act on inefficiencies, non-optimized processes and process conditions in alarm, so you can minimize problems and maximize the performance of your business.

- Powerful, intelligent InTouch graphics and faceplates provide context to data, enabling faster analysis and improved operator effectiveness
- Distributed Alarm Displays provide a comprehensive summary of current alarms so operators can minimize downtime and increase throughput
- InTouch is integrated with ArchestrA Workflow to help ensure that critical, standard operating procedures are followed and are traceable



## ...do it SAFER

With InTouch's re-usable, pre-tested ArchestrA graphics you can lower your implementation risk, enforce standards, simplify application revision control and improve operator consistency. Errors are reduced and rollouts go more smoothly.

InTouch supports Microsoft integrated security, Active Directory and Smart Card technology. Within regulated and validated industries, InTouch applications help you meet the most stringent security requirements such as FDA 21 CFR Part 11.

InTouch supports the latest Microsoft and VMware virtualization technologies to minimize downtime and keep you in control.



the World's #1 HMI company

Device Independent  
Naming &  
Data Handling

Templates  
with Graphics,  
Quality, History &  
Security

and Solutions

lock  
m  
ntial

Improve  
Decision  
Making

Virtualization &  
Remote Desktop  
Support

Value

Improve  
Security

Versatile  
multi-user  
Development  
& Remote  
Management

Reduce  
Risk

Reduce  
Total Cost of  
Ownership

Stay  
Compliant

ware

uch

## ...do it FASTER

The ability to respond quickly to market conditions helps you be more competitive and more profitable. Agility can mean the difference between staying ahead or falling behind. InTouch allows you to quickly switch processes or equipment so you can be ready to seize any market opportunity.

- Standardized, pre-tested graphics and automatic I/O switching allow application changes to be made quickly and safely
- InTouch's unique centralized deployment capability eliminates the need for someone to go to each facility to update applications
- Operators quickly absorb changes to standardized InTouch applications— helping to reduce operating errors and shorten learning curves

## ...do it CHEAPER

InTouch saves you travel costs and engineering time by allowing you to build, test and deploy your InTouch applications from a central location. Standardization and reusable design within InTouch improves engineering efficiency, reduces training burden and minimizes the cost of future changes.

InTouch's support of Microsoft Remote Desktop Services and Hyper-V virtualization technologies reduce your hardware costs and improves your system's availability and disaster recovery capabilities.

Your investment in InTouch is also protected; an InTouch application created decades ago still runs on today's InTouch.

# Wonderware InTouch is Everywhere

Wonderware InTouch controls over 100,000 plants and factories around the world. InTouch has enabled these plants to achieve world-class performance, reduce costs and maintain product quality. Here are a few examples of the success enjoyed by our customers using InTouch.



## New Belgium Brewing

**Application:** New Belgium Brewing, brewers of Fat Tire ale and the third largest “craft brewery” in the US, undertook a significant project to improve their environmental sustainability.

In this innovative, award winning project, Wonderware InTouch HMI plays a key role in visualizing, optimizing and controlling a wide range of plant operations including the entire wastewater treatment process, biogas production, solar power production and overall energy usage within the plant. Smart Grid is also part of this solution with the brewery able to reduce electrical demand during peak energy demand, benefitting both New Belgium Brewing and the local community.



“Every project that we design, we think of the environment first. That’s where Wonderware was able to offer the additional benefit of managing operations and helping us achieve high levels of sustainability.”

– Igor Valuyev, Chief Electrical and Automations Engineer

## Pepsi Bottling Ventures of Garner

**Application:** Pepsi Bottling Ventures of Garner, North Carolina, produces over 30 million cases per year and is the #1 rated Pepsi bottling plant in North America. Their goal was to improve plant performance and provide greater visibility for plant operations and management. They also wanted to maintain high product quality levels, improve process reliability and reduce their environmental impact. It was also very important that the system they built be scalable.

The solution featured Wonderware InTouch, System Platform and other Wonderware products and was installed on all five lines at the Garner facility. The system quickly provided them with accurate, real-time plant performance data. Besides improving basic operations, they wanted to drive sustainability goals. They recognize that good environmental practice is also good business: the less raw materials they use, the less waste they generate, the less energy they use, the lower their costs.



“We have to make the right decisions everyday because it has a huge impact on our bottom line. Wonderware helps us make those decisions.”

– Scott Jamison,  
Vice President of Engineering



## Portland General Electric

**Application:** Portland General Electric supplies electric power to 2 million residents of Portland, Oregon. To ensure that it can provide residents with ample and affordable electrical power, Portland General Electric implemented a demand-response program using Wonderware industrial automation and information software. This system allows Portland General Electric reduce peak loads through automated connection of customer emergency stand by generators to the Portland General Electric grid.



“The Wonderware solution is working great. To my knowledge there are no other utilities in the world that have the ability to start 40 megawatts of paralleled power generation located at numerous customer sites with a single mouse click.”

– Mark Osborn, Distributed Resources Manager

## Spokane Water Department

**Application:** Spokane Water needed to replace their 80's era SCADA system with a modern, scalable and easily modifiable system. After selecting a Wonderware HMI SCADA system featuring InTouch and other Wonderware products, Spokane Water was able to reduce lost water to a very low 6%, enable remote facility monitoring reducing required travel by two thirds. The Wonderware's scalable architecture and object based implementation allows Spokane Water to build and maintain the system using in-house staff. The redundant InTouch HMI SCADA solution guarantees uninterrupted 24/7 operations.



“The biggest selling point was the interface (InTouch) between the operator and the system – people who use it actually like it. The real value to us is that we have continuous monitoring and can identify problems more quickly.”

– Mark Cleveland, Operations Supervisor

# InTouch Fits Any Situation in Your Facility

Wonderware InTouch can be deployed to meet your specific requirements, from the traditional control room implementation with one or more monitors, to panel displays at an equipment location or manufacturing cell, to even a mobile operator moving through the facility using an Apple iPad.

InTouch also supports the latest Microsoft Remote Desktop Services<sup>1</sup> technology to help you simplify your deployment and lower your system costs.

InTouch applications can be deployed remotely – no need to travel to install a new or updated InTouch application. Centralized application management via the ArchestrA Integrated Development Environment (IDE), now included with InTouch, makes it easy to keep InTouch applications up-to-date and running trouble-free.

Virtualization is a hot topic today, and can save you a significant amount in convenience and hardware costs. No one in the industry offers more virtualization options than Wonderware, including the latest Microsoft virtualization technology, Hyper-V and VMware. InTouch leverages Hyper-V and VMware so you can set up redundant HMI applications locally or at a remote site for more cost effective high availability and disaster recovery options.

<sup>1</sup> formerly Terminal Services

**“I’ve found the Wonderware software to be light years ahead of other software. It was very simple to pick up on the programming. I would say that the Wonderware software has given us a 15 to 20% reduction in our downtime.”**

Jason Gitt,  
General Manager,  
PVC Compounders





## InTouch is Your Real-Time Window into Your Most Critical Processes

How can you make better real-time decisions if you don't have real-time data from your most important production processes? Wonderware InTouch has been helping industrial companies visualize their production processes in real-time for 25 years.

Operators use InTouch to visualize and control vital plant processes in real-time.

Managers use InTouch to better understand what is occurring in their plants so they can take action when truly needed.

Engineers and other technical workers use InTouch to detect and troubleshoot problems in their processes.

Maintenance personnel can use InTouch to monitor critical equipment and machines that are starting to degrade so they can be better prepared to repair them when needed – reducing unscheduled downtime and maintenance costs.

Plant IT can use InTouch's visualization capabilities to create system diagnostic displays so they can maintain these critical applications more effectively.

# Wonderware Delivers So Much More

Wonderware products are a comprehensive set of industrial software solutions that assist you on your path to greater business success. All Wonderware software solutions are tightly integrated to help improve your business today, and expand your operations in the future; so you can start small and grow your business at your own pace with peace of mind that Wonderware solutions will grow with you.

## **InTouch HMI**

Wonderware InTouch enables users to quickly & easily create and centrally manage standardized, reusable, industrial applications; maximizing return on engineering, shortening project times, reducing risk and significantly reducing total cost of ownership.

## **ArchestrA System Platform**

ArchestrA System Platform provides a highly efficient and centralized, industrial software infrastructure that helps drive standards and helps you to develop, manage and maintain your industrial applications with exceptional scalability and openness. It provides a central development environment, an application server, historian, web-based information server and data connectivity.

## **Intelligence**

Wonderware Intelligence enables you to access, aggregate, contextualize (provide relationships) and visualize your critical operational metrics so you can more effectively monitor, collaborate, and compare results across the facilities within your enterprise.

## **IntelaTrac**

Wonderware IntelaTrac is the industry-leading mobile workforce and decision support system. IntelaTrac includes configurable software and ruggedized mobile hardware solutions that enable workflow, data collection and general task management, for plant operations, maintenance management, production tracking and compliance applications.

## **Wonderware MES**

Wonderware Manufacturing Execution Systems (MES) feature a complete set of functional capabilities for consistent and effective execution of operational activities, from product track & trace through work in progress and enterprise integration.

## **InBatch**

Wonderware InBatch is a comprehensive batch execution solution that manages and tracks equipment history, material genealogy, stringent security, web-based reporting and the ability to facilitate the design and implementation of systems that are compliant with the ISA S88 batch standard and FDA 21 CFR Part 11 regulations.

## **Quality**

Wonderware QI Analyst software is a complete statistical process control (SPC) software solution that provides powerful statistical techniques that empower every member of your team—from operators to quality professionals to decision-makers.

## **ArchestrA Workflow**

ArchestrA Workflow is an advanced workflow application that enables you to institutionalize work processes within your operational environment, helping you to ensure that standardized work activities are done by the right people, at right time, using the right processes.



# What's Behind the World's #1 HMI?

## **Invensys Customer FIRST Program & World-class Customer Support**

Invensys' commitment to you doesn't stop at our products. By enrolling in our Customer FIRST program you gain access to our award winning support organization and are provided the latest products from Invensys.

Year after year we win awards for our customer service. You can rely on us to help keep your Invensys' systems running smoothly and productively.

Saving money is always important and Customer FIRST also helps you save money over the long term with innovative discounts and flexible funding options.

## **The Industry's Leading Ecosystem**

The worldwide Invensys Partner Ecosystem has thousands of partners all with the goal of helping you succeed. They can not only help you with InTouch but with full breadth of Invensys' Enterprise Control offering.

**Authorized Distributors** - Our distributors can assist you in the selection and purchase of the Wonderware and Invensys offerings.

**System Integrator Partners** - Our integrator partners can deliver cost effective solutions using Invensys products, no matter what the industry.

**Industry Solution Partners** - Invensys works closely with application software providers, OEMs and VARs to offer industry specific solutions.

**Partner Products** - These complementary products add value to Invensys solutions and expand the value to our customers.

i n v e n s y s<sup>TM</sup>

Customer FIRST





**Invensys Operations Management**

5601 Granite Parkway III, Suite 1000

Plano, Texas 75024 U.S.A.

1.469.365.6400

[iom.invensys.com](http://iom.invensys.com)

Invensys, the Invensys logo, ArcestrA, Avantis, Eurotherm, Foxboro, IMServ, InFusion, SimSci-Esscor, Skelta, Triconex, and Wonderware are trademarks of Invensys plc, its subsidiaries or affiliates. All other brands and product names may be the trademarks or service marks of their representative owners.

© 2012 Invensys Systems, Inc. All rights reserved. No part of the material protected by this copyright may be reproduced or utilized in any form or by any means, electronic or mechanical, including photocopying, recording, broadcasting, or by any information storage and retrieval system, without permission in writing from Invensys Systems, Inc.